

**Gysflash 50.12 FV is a 50A high power stabilised supply incorporating Inverter technology with 5 functions :**

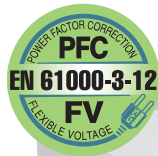
- **Battery support:** sustains 12V (liquid or gel) automotive battery during diagnostic work
- **Advance battery charger:** ensures an ideal charging cycle for battery maintenance for the most modern vehicle
- **Showroom mode:** maintains batteries in showroom vehicles
- **In «battery change» mode,** will maintain electrical supply to preserve vehicle memory settings
- **High power stabilised supply:** voltage & current adjustable

## 5 Modes

- Charge
- Diagnostic
- Showroom
- Change battery
- Power Supply

## Advanced features

- Automatic restart
- Cable test and calibration
- Showroom mode lock
- "Easy charge" mode
- Activate and adjust an "expert" charging curve
- Automatic SOS recovery for sulphated battery



10,5 cm

## Intuitive interface

19 Languages available

## Slim size

The height of the charger (<11cm) enables to place it under vehicle.

## Cables

- Fitted with 2x2.5m - 10mm<sup>2</sup> cables
- It can be fitted with 2x8m - 16mm<sup>2</sup> and more. The calibration is automatic.

## TECHNOLOGY

High duty cycle  
**94%**

15% more energy



No external ventilation  
=  
No dust ingress



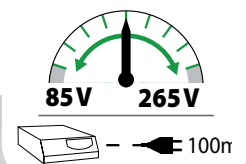
### Inverter

This technology enables :

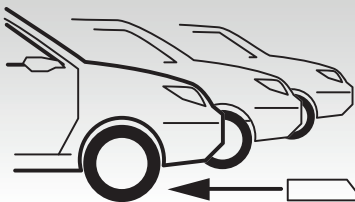
- A better duty cycle for a light weight (6.5 kg).
- Shock and vibration absorbing feet.

### FV Flexible Voltage

The GYSFLASH 40-12 FV is designed for use on mains power between **85 and 265V**.



## FEATURES



### Showroom Mode and reduced dimensions:

- Slim height (< 11 cm): to enable placement under vehicle.
- Showroom mode lock: to avoid mishandling ideal for garages and showrooms.
- Automatic restart: will automatically resume the mode from last position in case of power failure.

CE - EN 60335-2-29

50/60hz	850 W	Imax 100% @25°C	12 V	MIN. Ah	MAX. Ah	Charging Curve	BSU			Change Battery	IP	cm	kg
							Diag	Diag+	Showroom				
85 > 265 V	850 W	50 A	12 V	10-600 Ah	I <sub>U</sub> , I <sub>0</sub> , U	13,5V	12 > 14.8V		12.9 V	80 A	IP 21	30x29.2x10.5	6.5