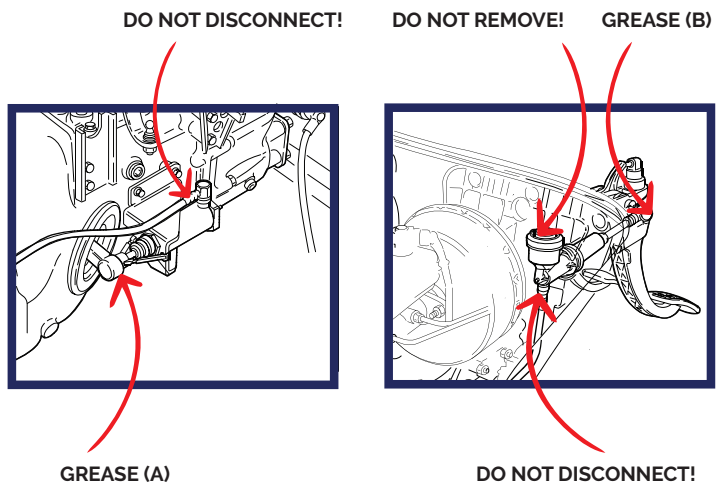


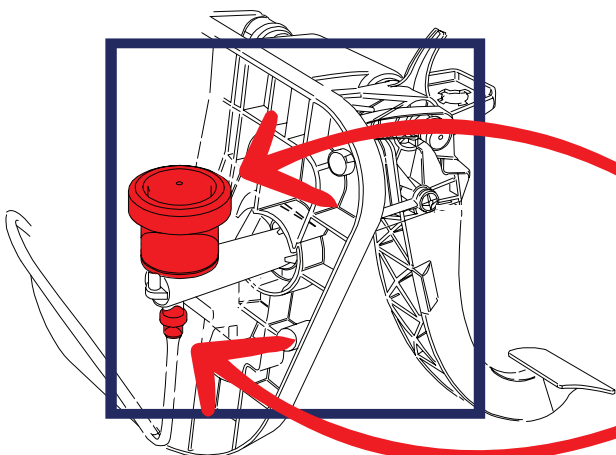
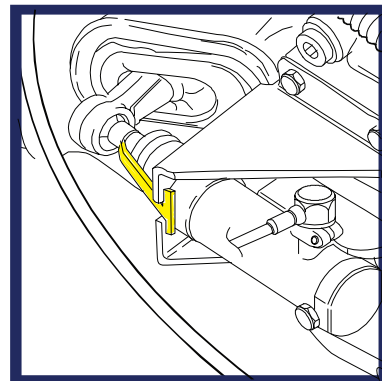
To correctly install the FT68020/FT68068 pump, the following steps and precautions must be preserved:

- Do not press the clutch pedal until the pump installation is completed.
- Do not allow the cylinder pump piston to slide out of working range (do not remove the protection before completing the installation of the clutch pump to the vehicle, do not press the pump stem manually) – extending the pump cylinder piston out of the working range results in immediate spillage of hydraulic fluid!

- Lubricate (A) the contact surfaces of the clutch disengagement lever with actuator stem,
- Lubricate (B) the socket on the pusher stem of the clutch pump piston, which will be mounted on a steel pin of the clutch pedal (be sure to check the diameter of the pin ball – worn element will have excessive slack in the socket which can cause improper clutch operation or self-disconnection of the mandrel from the pin),
- After tightening the steel foot of actuator bracket to the gearbox make sure that the actuator pusher is aligned with the socket in the clutch disconnect lever,



- After installing the new clutch pump kit, press clutch pedal tightly to break the plastic blocking elements from the pusher, or remove them manually,
- Press the clutch pedal manually to its resistance position with a force of not more than 50 N, and hold it in this position for at least five seconds, for the oil from the tank to feed the main cylinder. Then press the clutch pedal fully and hold in this position for 5 seconds. Lift the clutch pedal to the neutral position and check the operation of the clutch. If necessary (incomplete clutch disengagement or clutch pedal does not return automatically to the neutral position) repeat this procedure.



- Attention!**
- do not remove the fluid tank cover
 - do not disconnect the hydraulic line which connects the pump with the actuator
 - do not refill the tank