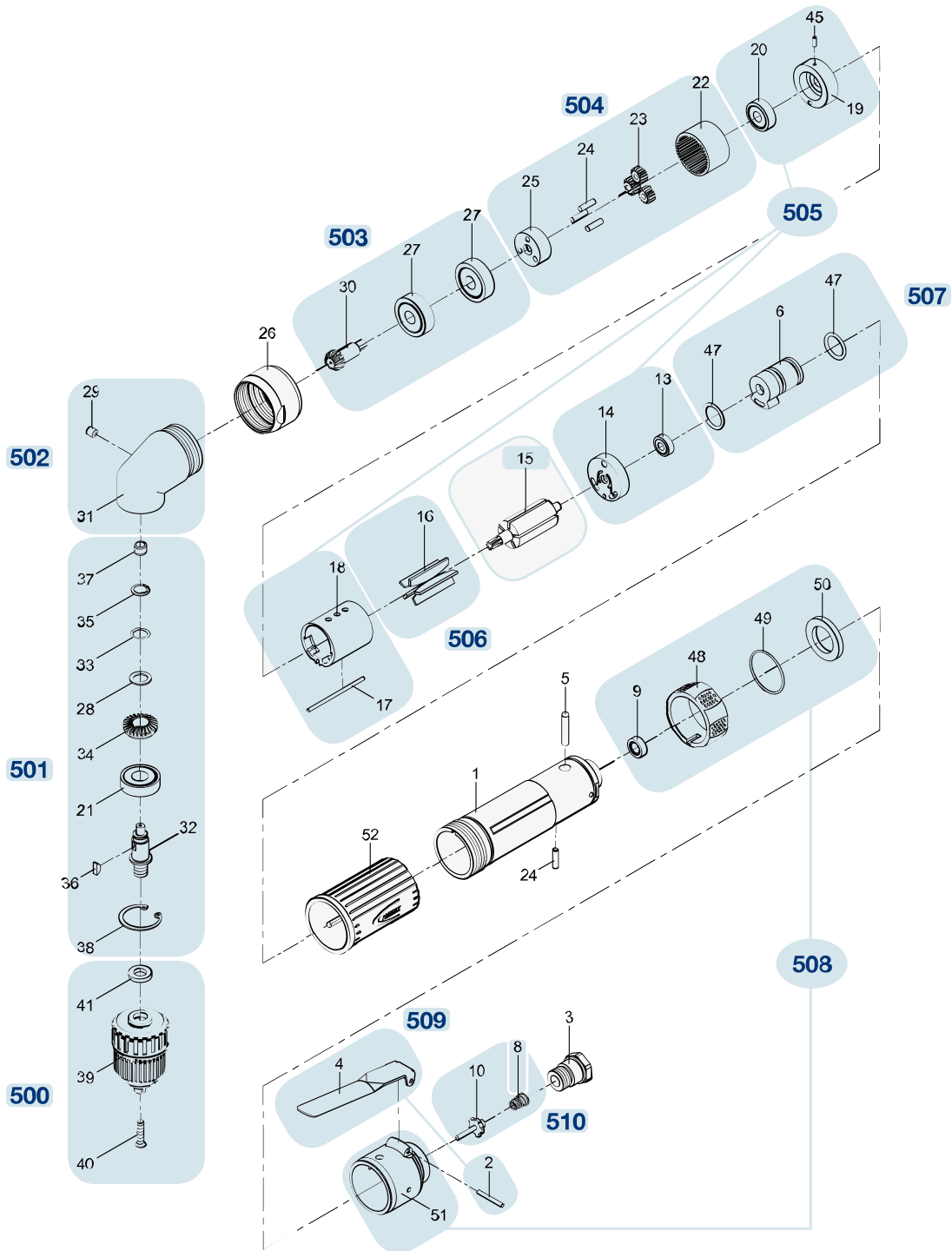



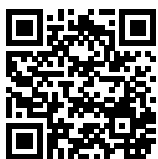
Ersatzteile 9030 N-5

Spare parts · Pièces de rechange



| Pos | HAZET No. | Bezeichnung | Designation | Désignation | |
|-----|---------------|-----------------------------------|--------------------------------------|----------------------------------|---|
| 15 | 9030 N-5-012 | | | | 1 |
| 500 | 9030 N-5-01/3 | Bohrfutter · Inhalt: 39 · 40 · 41 | Drill chuck · Contents: 39 · 40 · 41 | Mandrin · Contenu : 39 · 40 · 41 | 3 |
| 501 | 9030 N-5-02/9 | | | | 9 |
| 502 | 9030 N-5-03/2 | | | | 2 |

| Pos | HAZET No. | Bezeichnung | Designation | Désignation |  |
|-----|----------------|--|--|--|---|
| 503 | 9030 N-5-04/3 | | | | 3 |
| 504 | 9030 N-5-05/8 | Planetengetriebe · Inhalt: 22 · 23 (3x) · 24 (3x) · 25 | Planetary gear · Contents: 22 · 23 (3x) · 24 (3x) · 25 | Réducteur planétaire · Contenu : 22 · 23 (3x) · 24 (3x) · 25 | 8 |
| 505 | 9030 N-5-06/7 | | | | 7 |
| 506 | 9030 N-5-07/5 | Lamellen · Inhalt: 16 (5x) | Blades · Contents: 16 (5x) | Lamelles · Contenu : 16 (5x) | 5 |
| 507 | 9030 N-5-08/3 | | | | 3 |
| 508 | 9030 N-5-09/5 | | | | 5 |
| 509 | 9030 N-5-010/2 | Abzughebel · Inhalt: 2 · 4 | Trigger · Contents: 2 · 4 | Levier de tirage · Contenu : 2 · 4 | 2 |
| 510 | 9030 N-5-011/2 | Ventil-Schaft · Inhalt: 8 · 10 | Valve shaft · Contents: 8 · 10 | Tige de soupape · Contenu : 8 · 10 | 2 |

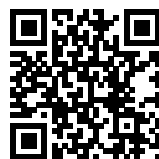


DE

HAZET Service online:
www.hazet.de/de/home/service/



EN




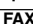
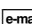
DE


HAZET Ersatzteil-Shop
HAZET Spare-parts-shop:
www.hazet.de/ersatzteil-shop




EN

Zur Bestellung und für Rückfragen wenden Sie sich bitte an unsere Service-Abteilung
For Orders and questions please refer to our service-centre

 +49 (0) 21 91 / 7 92 355 ·  +49 (0) 21 91 / 7 92 523 ·  service-center@hazet.de

HAZET-WERK – Hermann Zerver GmbH & Co. KG ·  10 04 61 · 42804 REMSCHEID

 Gùldenwerther Bahnhofstrasse 25 – 29 · 42857 REMSCHEID · GERMANY