

Clutch



Hard Clutch Pedal Issue

Concerning BCS112, 143, 144,
157, 161, 187, 192, 201

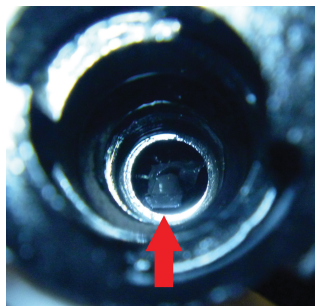
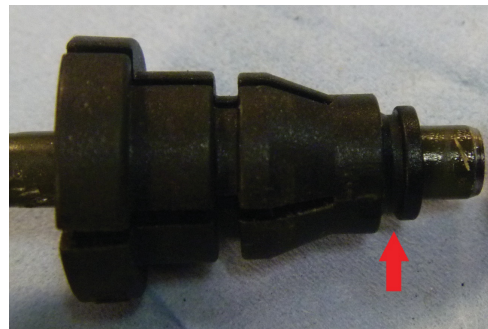
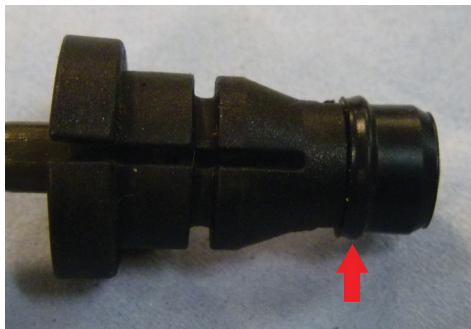
CLTB 0025

Hard Pedal Installation Issue

Affected references: BCS112, 143, 144, 157, 161, 187, 192, 201

Borg & Beck have been made aware of possible "hard clutch pedal" installation issues with the above range of CSC's.

It should be noted that during the removal of the old CSC the seal on the connecting nozzle can detach and become stuck inside the connecting pipe. This causes a blockage when the new CSC is installed, which in turn results in the issue of a "hard clutch pedal"



(Blocked Port by CSC Seal)

Borg & Beck Advise:

After removal of the CSC always visually check that the seal is in place on the connecting nozzle and check for obstructions inside the connecting tube.



www.borgandbeck.com

TECHNICAL INFORMATION