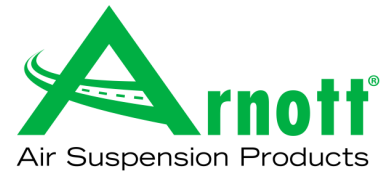


Installation Manual

AS-3465
ARNOTT
REMANUFACTURED FRONT RIGHT AIR STRUT
2014-2020 MERCEDES-BENZ S-CLASS/MAYBACH AMG
(W222)
W/AIRM & 4MATIC, W/OUT ABC



Congratulations on your purchase of an Arnett® air suspension product. We at Arnett Incorporated are proud to offer a high quality product at the industry's most competitive pricing. Thank you for your confidence in us and our product.

Proper installation is essential to experience and appreciate the benefits of this system. Please take a moment to review these installation instructions before you begin to install these components on your vehicle. The removal and installation of air suspension products should only be performed by a fully qualified, ASE Certified, professional.

It is equally important to be aware of all necessary safety measures while installing your new Air Suspension System. This includes proper lifting and immobilizing of the vehicle and isolation of any stored energy to prevent personal injury or property damage.

"Engineered to Ride, Built to Last®"



WARNING: *The air suspension system is under pressure (up to 10 bar, or 150 lbf/in). Verify pressure has been relieved and disconnect power to the air suspension system prior to disassembly. Do not allow dirt or grease to enter the system. Always wear standard hand, ear, and eye protection when servicing the air suspension system.*

Arnett® is committed to the quality of its products. If you have a question or problem with any Arnett product, please contact Arnett by calling **800-251-8993** during normal business hours or email techassistance@arnottinc.com. (In the EU please call +31 (0)73 7850 580 or email info@arnotteurope.com)

GENERAL INFORMATION:

Reading this manual signifies your agreement to the terms of the general release, waiver of liability, and hold harmless agreement, the full text of which is available at www.arnottinc.com.

- Not to be stored below 5°F (-15°C) and above 122°F (50°C).
- Avoid damage to air lines and cables.
- Removal and installation is only to be performed by fully qualified personnel.
- Use car manufacturer's diagnostic software.

CAUTION: Damage to the vehicle and air suspension system can be incurred if work is carried out in a manner other than specified in the instructions or in a different sequence.



To avoid the possibility of short circuits while working with electric components consult your owner's manual on how to disconnect your battery.



Consult your vehicle owner's manual, service manual, or car dealer for the correct jacking points on your vehicle and for additional care, safety and maintenance instructions. Under no circumstances should any work be completed underneath the vehicle if it is not adequately supported, as serious injuries and death can occur.

AIR STRUT REMOVAL

1. RAISE VEHICLE AT LIFTING POINTS PRESCRIBED BY MANUFACTURER
2. REMOVE APPLICABLE ENGINE BAY TRIM TO GAIN ACCESS TO THE TOP STRUT MOUNT. (FIGURES 1, 2)



FIGURE 1

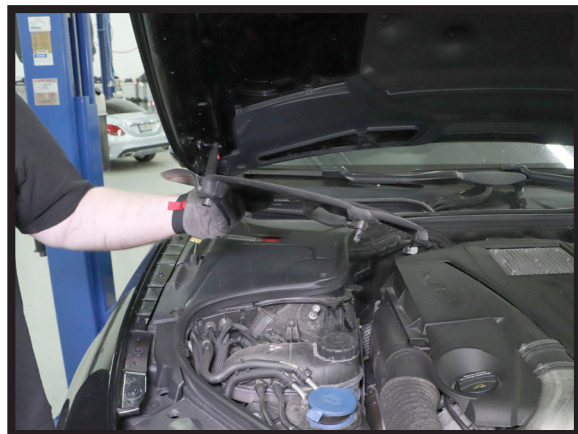


FIGURE 2

3. SLOWLY DISCONNECT AIR LINE FITTING FROM THE TOP OF THE STRUT. (FIGURE 3)

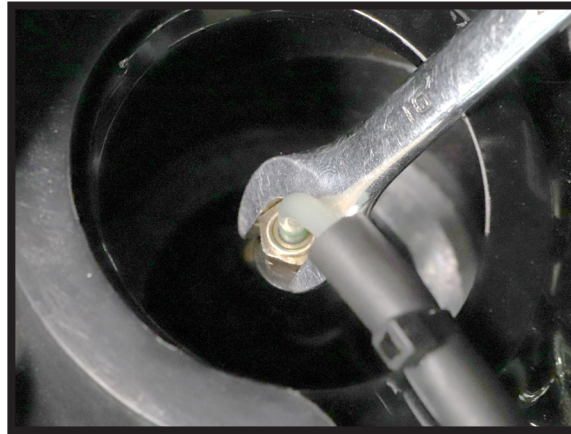


FIGURE 3

4. REMOVE USED AIR LINE FITTING FROM THE AIR LINE AND DISCARD. USE THE FIGURE BELOW AS AN EXAMPLE. (FIGURE 4)

REMOVAL



Prior to inserting the existing air line into the new air strut you will need to remove the old original equipment air line fitting and discard.

NOTE: SCRATCHES AND/OR DEEP CUTS IN THE AIR LINE CAN RESULT IN POSSIBLE LEAKS. INSPECT THE AIR LINE BEFORE INSERTION. AIR LINE NEEDS TO BE REPLACED IF DAMAGED.

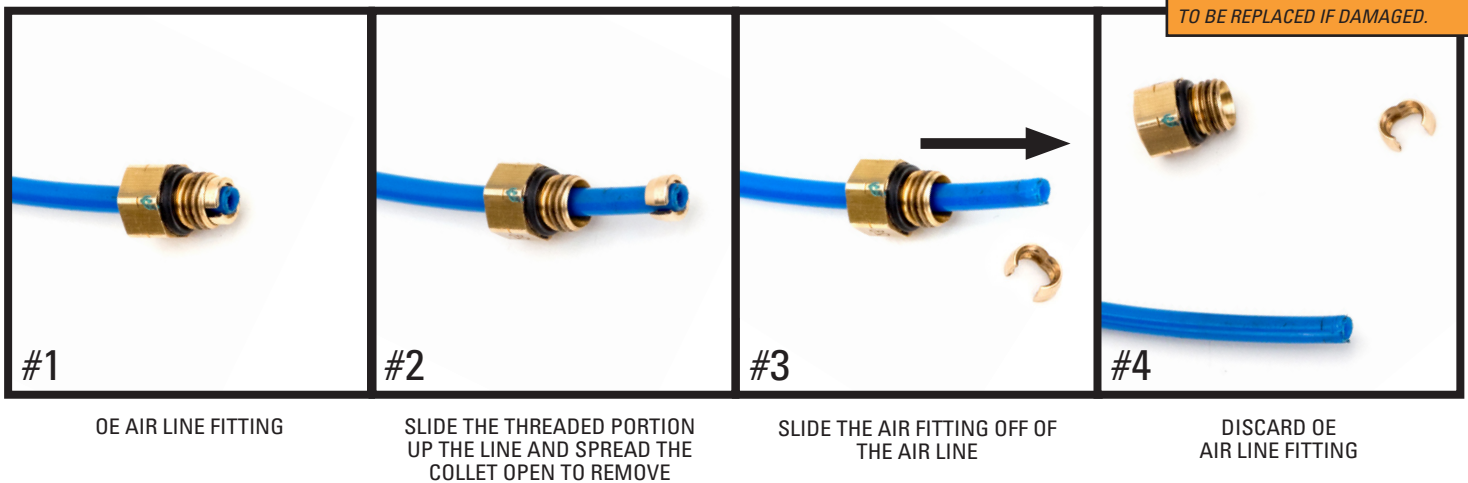


FIGURE 4

5. REMOVE FRONT RIGHT WHEEL. (FIGURE 5)



FIGURE 5

6. DISCONNECT THE TWO (2) ELECTRICAL CONNECTORS FROM THE STRUT. (FIGURES 6, 7)

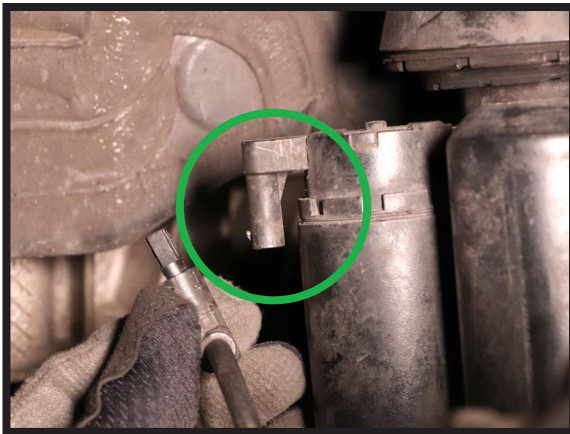


FIGURE 6

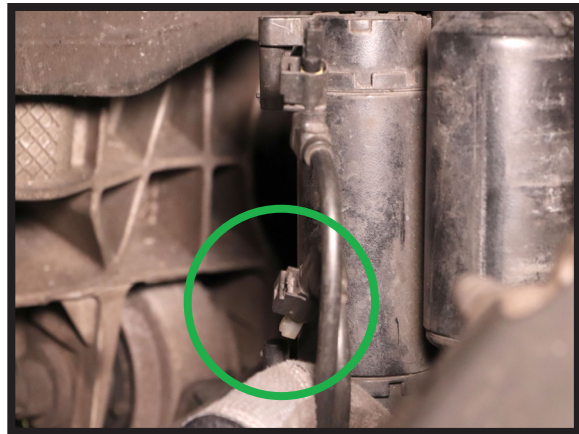


FIGURE 7

7. UNROUTE THE LINES AND DISCONNECT THE STRUT WIRE HARNESS FROM THE LOWER MOUNT OF THE STRUT. (FIGURES 8, 9)

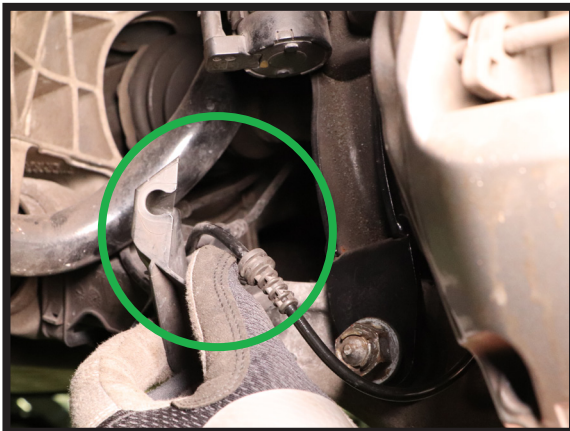


FIGURE 8



FIGURE 9

8. REMOVE LOWER STRUT BOLT AND NUT. (FIGURES 10, 11)



FIGURE 10



FIGURE 11

9. REMOVE THE THREE (3) TOP MOUNT NUTS. (FIGURE 12)

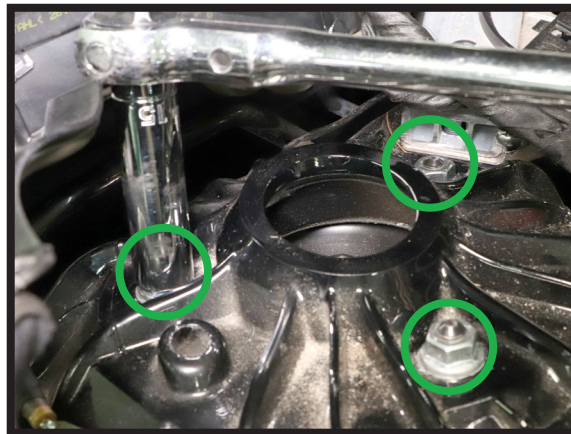


FIGURE 12

10. REMOVE BOLT AND NUT FROM SPINDLE AND DISCONNECT. (FIGURES 13, 14)

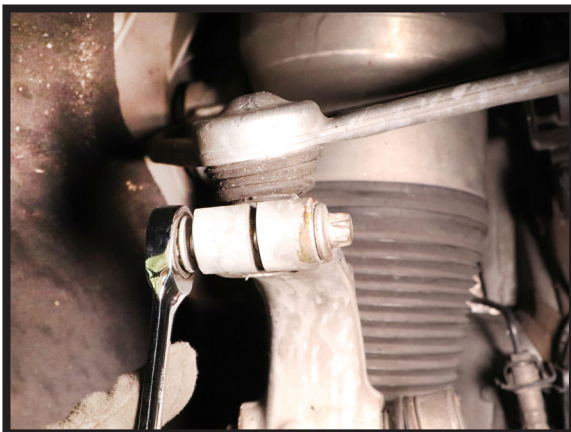


FIGURE 13

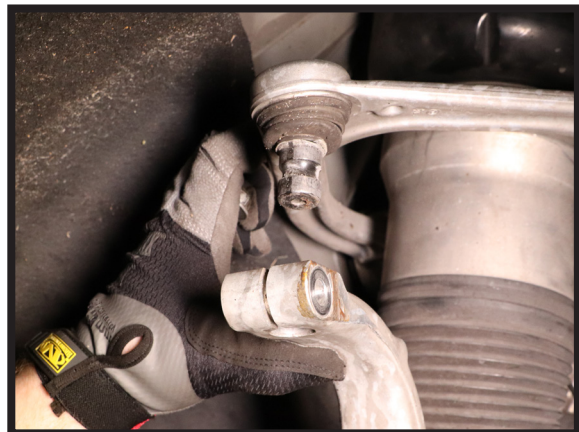


FIGURE 14

11. REMOVE THE STRUT FROM THE VEHICLE. (FIGURE 15)



FIGURE 15

12. REMOVE TOP MOUNT PLATE FROM THE STRUT. THIS WILL BE REUSED IN THE INSTALLATION. (FIGURE 16)



FIGURE 16

13. REMOVAL COMPLETE.

AIR STRUT INSTALLATION



Tighten all nuts and bolts to manufacturer's specifications during the installation process.

1. REMOVE THE SHIPPING PLUG FROM THE CHECK VALVE AND INSTALL THE VOSS FITTING FROM THE PROVIDED ACCESSORY KIT ON TO THE ARNOTT AIR STRUT. REMOVE THE SHIPPING PIN FROM THE VOSS FITTING. (FIGURES 17, 18, 19)



FIGURE 17



FIGURE 18



FIGURE 19

2. INSTALL THE TOP MOUNT PLATE ON TO THE NEW STRUT. (FIGURE 20)

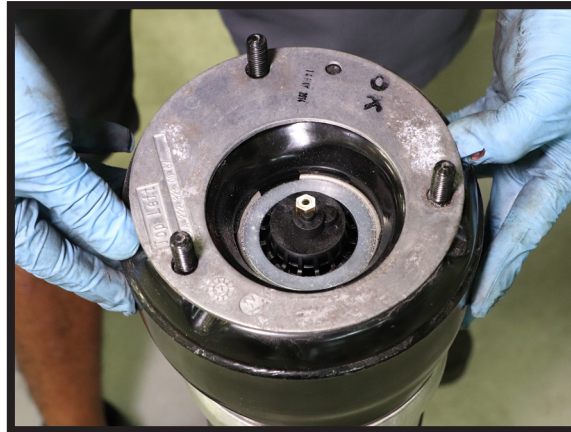


FIGURE 20

3. INSTALL THE ARNOTT STRUT IN THE VEHICLE. (FIGURE 21)



FIGURE 21

4. RECONNECT THE SPINDLE TO INSTALL THE BOLT AND NUT. TIGHTEN TO MANUFACTURER'S SPECIFICATIONS. (FIGURES 22, 23)



FIGURE 22



FIGURE 23

5. REINSTALL THE BOTTOM MOUNT BOLT AND NUT. TIGHTEN TO MANUFACTURER'S SPECIFICATIONS. (FIGURE 24)



FIGURE 24

6. INSTALL THE THREE (3) TOP MOUNT NUTS PROVIDED IN THE ACCESSORY KIT. TIGHTEN TO MANUFACTURER'S SPECIFICATIONS. (FIGURE 25)

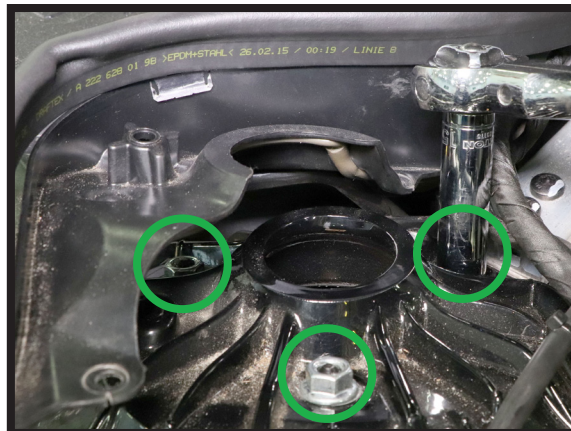


FIGURE 25

7. CONNECT THE TWO (2) ELECTRICAL CONNECTORS TO THE NEW STRUT SOLENOID. (FIGURES 26, 27)



FIGURE 26

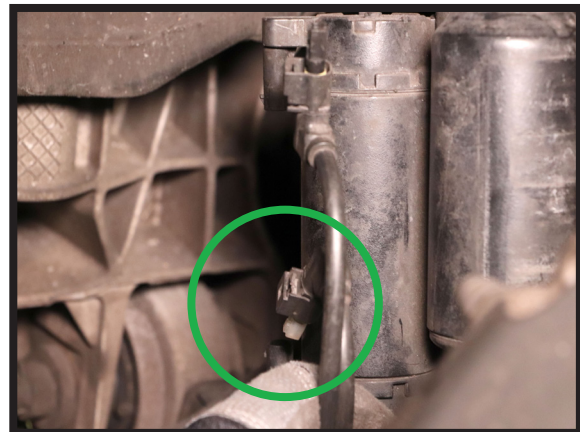


FIGURE 27

8. REINSTALL THE STRUT WIRE HARNESS USING THE PROVIDED ZIP TIE AND REROUTE THE LINES.
(FIGURES 28, 29)

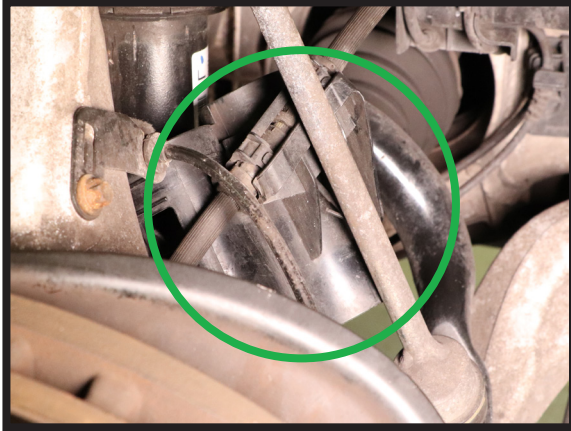


FIGURE 28



FIGURE 29

9. PUSH THE AIR LINE INTO THE AIR FITTING ON THE TOP OF THE STRUT UNTIL IT IS FULLY SEALED/SEATED
(FIGURE 30)

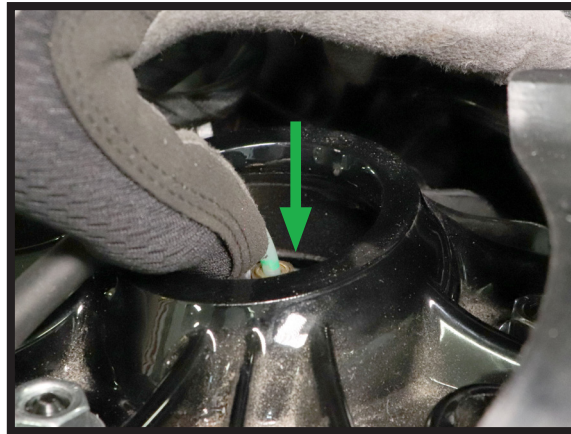


FIGURE 30

10. REINSTALL THE APPLICABLE ENGINE BAY TRIM.
11. REINSTALL THE FRONT RIGHT WHEEL.
12. INFLATE THE AIR STRUT PER MANUFACTURER'S SPECIFICATIONS.
13. LOWER THE VEHICLE.
14. INSTALLATION COMPLETE.