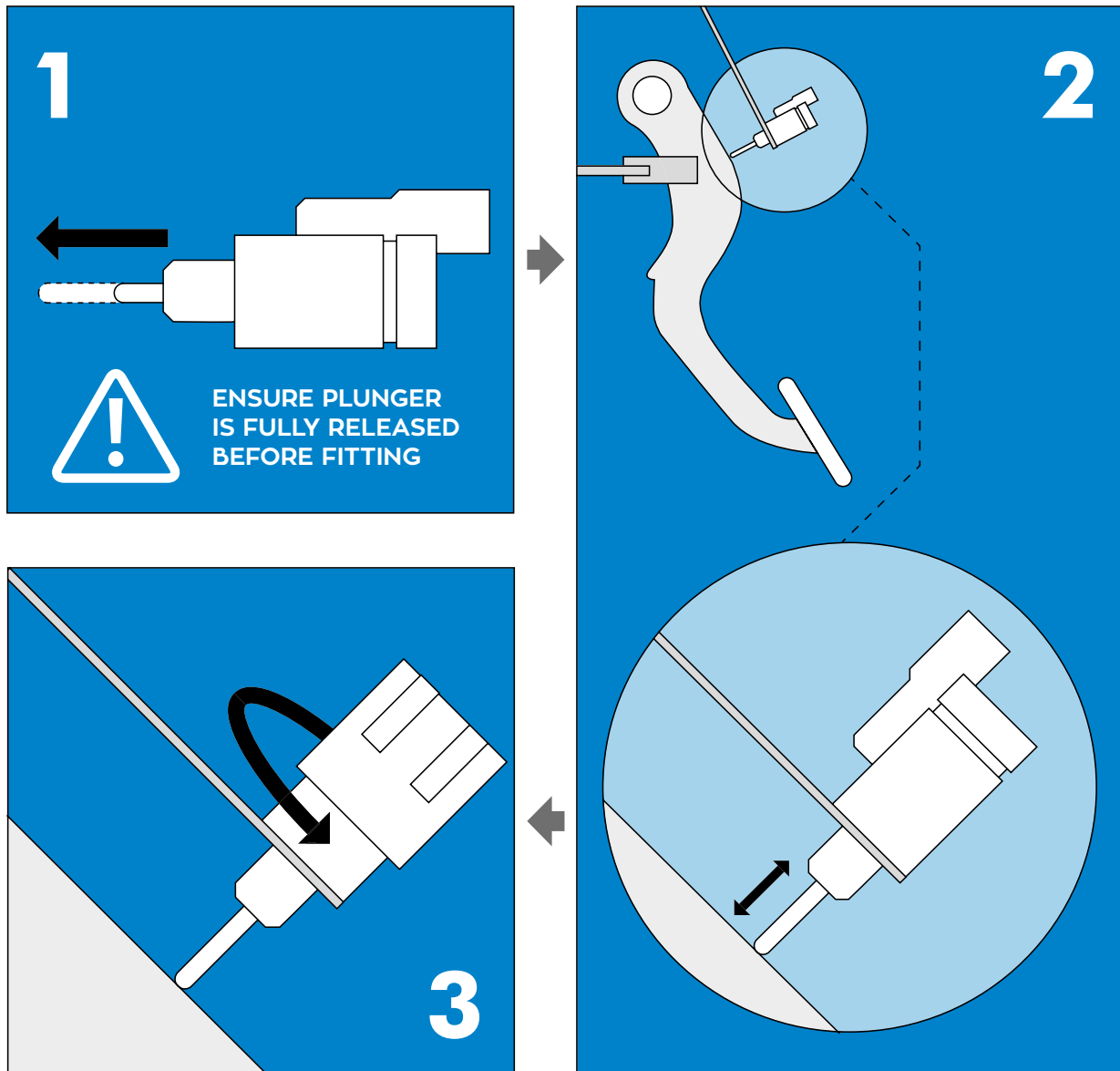


PEDAL SWITCHES FITTING ADVICE



1. Pull out the plunger.

Many pedal switches will fit multiple vehicles and so will feature a variable plunger length. The plunger is often pushed in when packed to reduce the risk of damage in transit. When taking the switch out of the box ensure that the plunger is fully extended.

2. Push into position.

After disconnecting and removing the failed brake light switch, push the new switch into position. The extended plunger will push against the brake pedal and push back into the required position for the vehicle.

3. Twist to lock.

Once in place twist the pedal switch and the plunger will lock into the new position. Reconnect the wiring and conduct a visual test to ensure that the brake lights now function correctly.