



Betriebsanleitung

**Werkstattwagen**

Operating Instructions

**Tool Trolley**

Mode d'emploi



**Servante d'atelier**

Instrucciones de uso

**Carro para herramientas**

Gebruiksaanwijzing

**Gereedschapswagen**

Istruzioni d'uso

**Carrello portautensili**

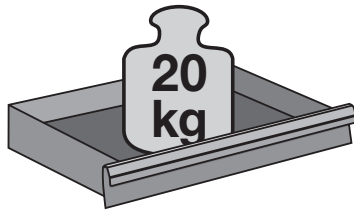
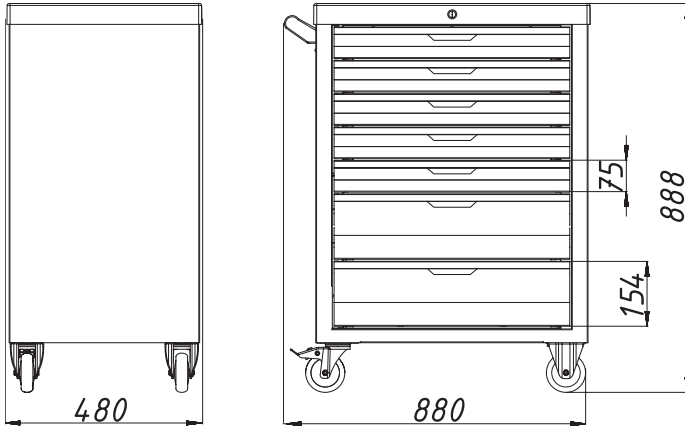


**V5489**

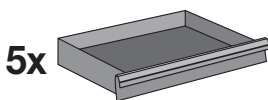




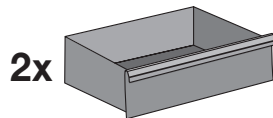
**V5489**



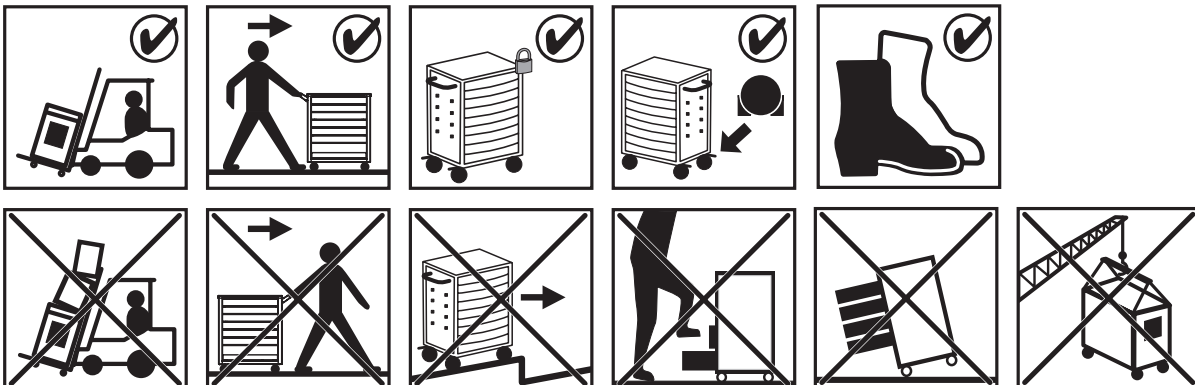
	Einzel- und Ersatzteile	Spare Parts
<b>V1907</b>	Bockrolle Ø 125 mm	Fixed Castor Ø 125 mm
<b>V1908</b>	Lenkrolle mit Bremse Ø 125 mm	Swivel Castor with brake Ø 125 mm
<b>V5489-1</b>	Führungsschienen	Drawer Rails (Pair)
<b>V5489-2</b>	Matte	Plastic Worktop
<b>V5489-3</b>	Hohes Schubfach	High Drawer
<b>V5489-4</b>	Flaches Schubfach	Flat Drawer
<b>V1904</b>	Verriegelungssystem	Locking System
	<b>Zubehör</b>	<b>Accessories</b>
<b>V2393</b>	Dosenhalter	Can holder
<b>V2397</b>	Papierrollenhalter	Holder for paper reel
<b>V2398</b>	Trennblech-Satz	Set separation sheets



569 x 398 x 75 mm



569 x 398 x 154 mm



VIGOR GmbH • Am Langen Siepen 13-15 • 42857 Remscheid • GERMANY

+49 (0) 21 91 / 97 95 • FAXI +49 (0) 21 91 / 97 96 00 • e-mail info@vigor-equipment.com • www.vigor-equipment.com