



TURBOS
TURBOS HOET



NUMBER ONE
IN
TURBOS

TECHINFO

T121

WWW.TH-GROUP.EU

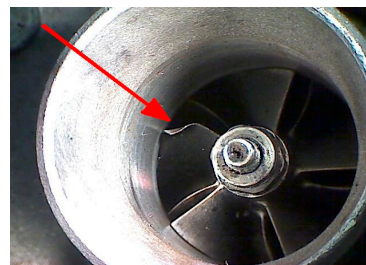
TECHINFOT121

TECHNISCHE INFO – 1.3JTD/CDTI MULTIJET FIAT/ LANCIA/ OPEL

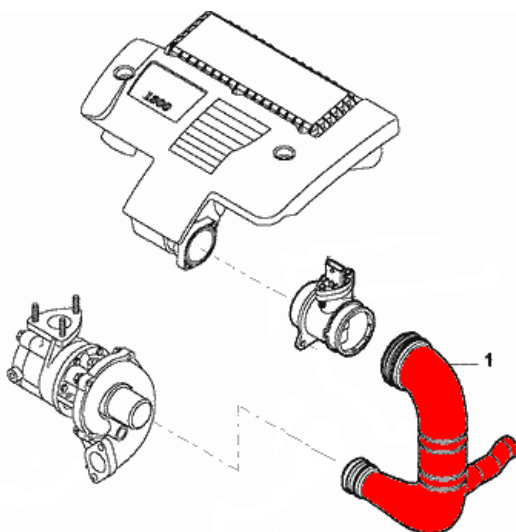
De 1.3 Multijet motoren hebben specifieke aandacht nodig bij vervanging van de turbo zodat herhaling van de turbo schade wordt voorkomen.

Het is dus van groot belang dat volgende werkmethode wordt opgevolgd:

Voor montage van de nieuwe Turbo's Hoet turbo moet de oude turbo worden gecontroleerd op beschadigingen aan de compressorwiel vanen.



Indien één of meer vanen van het compressorwiel zijn verbogen moet de verbindingsslang (1) worden vervangen door een nieuwe slang.



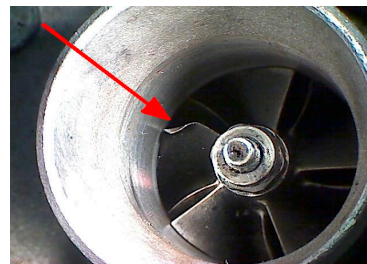
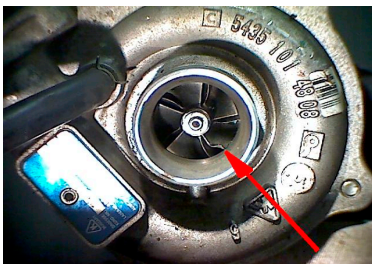
TECHINFOT121

INFO TECHNIQUE – 1.3 JTD/CDTI MULTIJET FIAT/ LANCIA/ OPEL

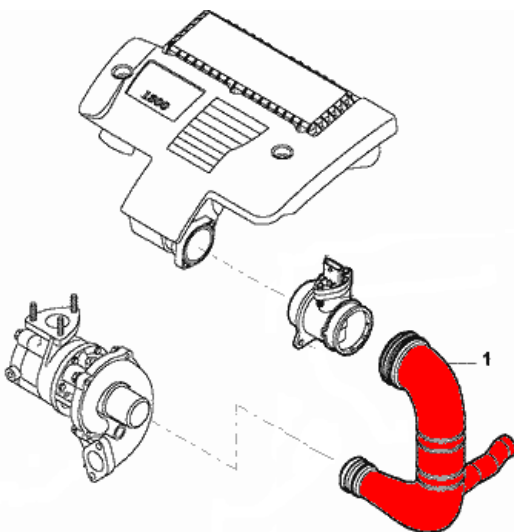
Le moteur 1.3 Multijet nécessite une attention particulière lors du remplacement du turbo, afin d'éviter une répétition de la panne.

Il est donc primordial de suivre les instructions suivantes:

Avant la pose du nouveau turbo Turbo's Hoet, il faut vérifier l'état de la roue de compression de l'ancien turbo, notamment l'état des pales de la roue.



Lorsque une ou plusieurs pales sont endommagées, la durite d'admission (1) doit être remplacée par un élément neuf

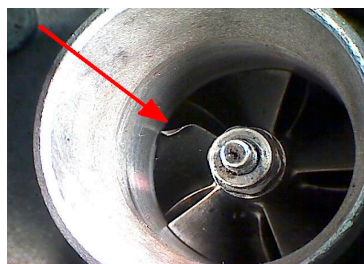


TECHINFOT121

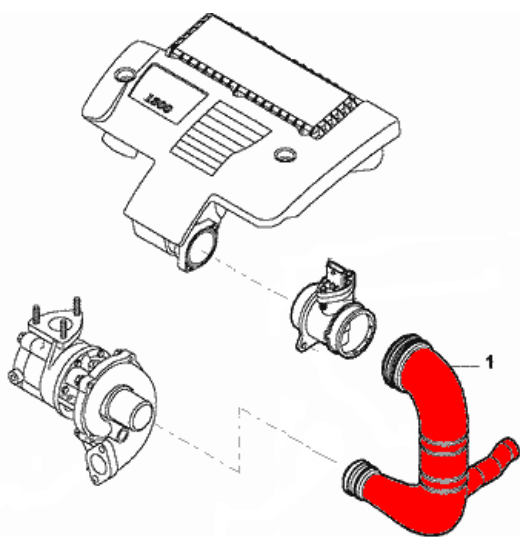
ТЕХНИЧЕСКА ИНФОРМАЦИЯ – 1.3 JTD/CDTI MULTIJET FIAT/ LANCIA/ OPEL

Двигателите на 1.3 Multijet се нуждаят от специално внимание при подмяна на турбокомпресора с оглед предотвратяване на по-нататъшни повреди. **Важно е да се спазват следните процедури:**

Преди монтирането на новият турбокомпресор "Turbo's Hoet", трябва да бъде проверено за наранявания компресорното колело на старото турбо



Ако има наранени или изкривени витла, въздуховода (1) трябва да бъде подменен.

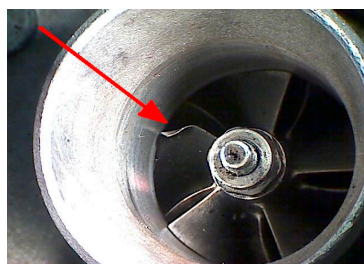


TECHINFOT121

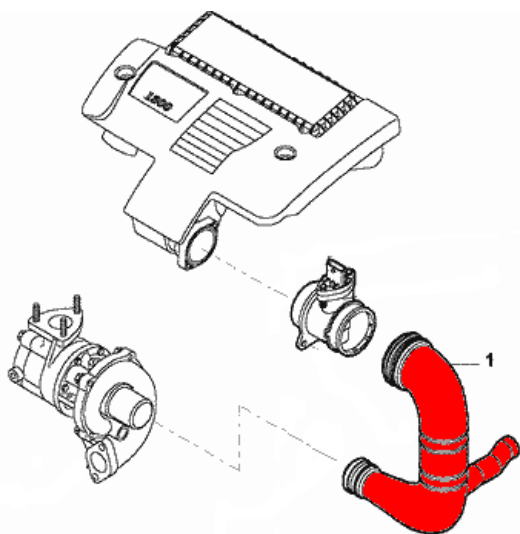
INFORMAȚII TEHNICE – 1.3 JTD/CDTI MULTIJET FIAT/ LANCIA/ OPEL

Motoarele 1.3 Multijet au nevoie de o atenție specială în timpul înlocuirii turbosuflantelor pentru a preveni defectarea ulterioară a turbosuflantei ce urmează să fie montată.

Înainte de a monta turbosuflanta nouă de la Turbo's Hoet, cea veche trebuie să fie verificată dacă nu există deteriorări ale palelor turbinei de comprimare



Dacă una sau mai multe pale ale turbinei de comprimare sunt îndoite, furtunul de conectare (1) trebuie să fie înlocuit cu unul nou.



Garrett[®]

by Honeywell



TURBOCHARGERS

IHI CHARGING SYSTEMS
INTERNATIONAL

 **BorgWarner**

 **turbolader**

Schwitzer