

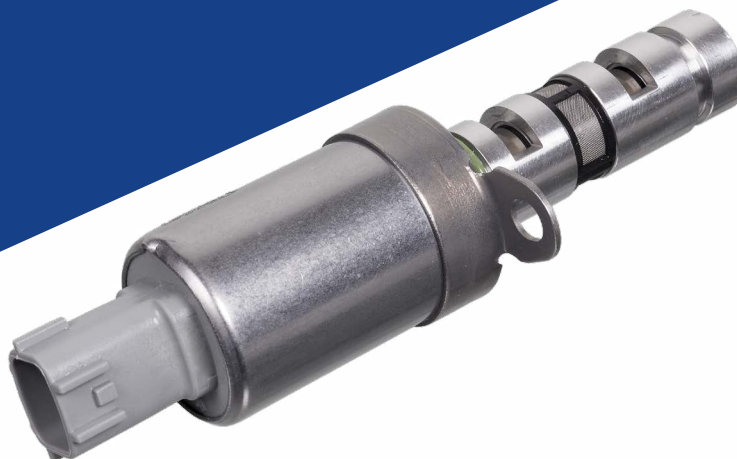
# NEW PRODUCT HIGHLIGHT | APR2019



## Blue Print ADN17270

to fit:  
Nissan Micra K12, Note E11

Engines:  
1.0 16v, 1.2 16v, 1.4 16v



EN

### SOLENOID VALVE FOR CAMSHAFT ADJUSTMENT

#### Function

Subject to engine load, the engine control unit determines whether to advance or retard the camshaft timing for optimal performance. The intake timing control solenoid valve is activated by pulse width modulation signals from the ECM. The valve changes the oil amount and direction of flow through the timing control unit or stops the oil flow. A longer pulse width advances the valve angle. A shorter pulse width retards the valve angle. When ON and OFF, pulse widths become equal and the solenoid valve stops the oil pressure flow to fix the intake valve angle at the controlled position.

#### Failure

Extended servicing periods or the use of the incorrect grade oil, can over time, cause contaminants in the engine oil which restricts the movement of the solenoid piston, causing the piston to stop operating. Symptoms include uneven idling, misfiring and incorrect exhaust emission values. When replacing this component it is advisable to change the engine oil and filter.

For more technical information please visit: [partsfinder.bilsteingroup.com](http://partsfinder.bilsteingroup.com)