

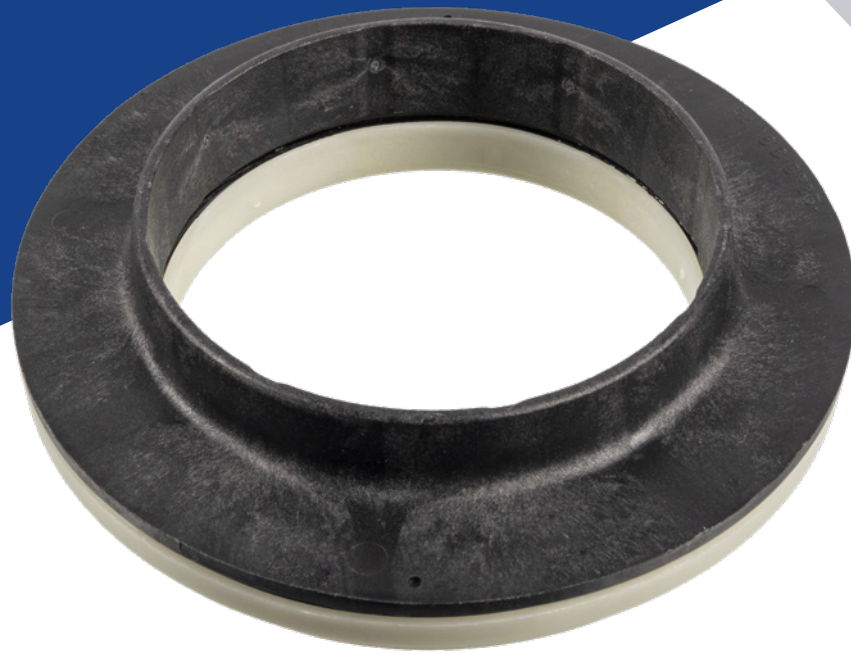
NEW PRODUCT HIGHLIGHT | APR2021



Blue Print ADBP800246

To Fit:
Various Nissan models

EN



Strut Mounting

Function

This suspension part is located between the strut top mounting and the coil spring. It enables the Macpherson strut suspension to rotate during steering with a low, constant-frictional torque. At the same time, it allows for spring rotation during normal suspension movements and transmits suspension loads to the chassis.

Cause of Failure

As the strut bearing is subjected to water and road debris, it wears out over time. This causes play between bearing shells to steadily increase, which results in a clicking sound during driving and can be felt when operating the steering at low speeds.

For more technical information please visit: partsfinder.bilsteingroup.com