



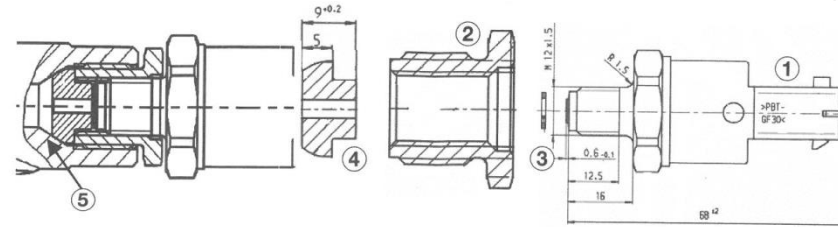
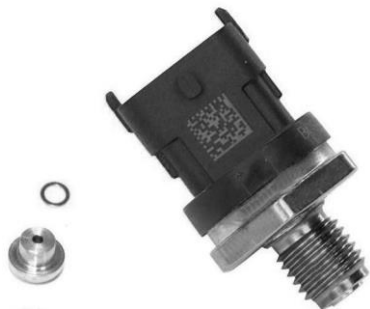
## Fitting Instructions

Part Number: 89501/CDS002

Common Rail Diesel  
Pressure Sensor

### Box Contents:

- Pressure Sensor
- Sealing Ring
- Intermediate Piece



### Removal Instructions

1. Remove the electrical connector from the sensor
2. Remove the rail pressure sensor (1) from retaining screw (2)
3. Take off the sealing ring (3)
4. Remove the retaining screw (2) from the fuel rail and take out the Intermediate piece (4)
5. Clean the retaining screw (2) for re-use, dispose of the intermediate piece (4)
6. Clean the sealing surface of the fuel rail (5) ready for fitting the new part

### Fitting Instructions

1. Put the new intermediate piece (4) into the retaining screw (2) and apply grease to the threads.
2. Fit the retaining screw and intermediate piece back into the rail, at a torque of 60Nm (+/- 20Nm)
3. Place the new sealing ring (3) on the new Pressure sensor using grease to hold it in place
4. Fix the sensor (1) and sealing ring (3) into the retaining screw (2) at a torque of 25Nm (+/-)2Nm
5. Reconnect the electrical connector
6. After fitting start the engine and check for fault codes. If a fuel rail pressure fault code is shown, remove the fault code and restart the vehicle.
7. Check the sensor for leaks when the engine has been running