

Technical Bulletin

TCK336 vs. TCK346. Identify the Correct Kit for Your Customer

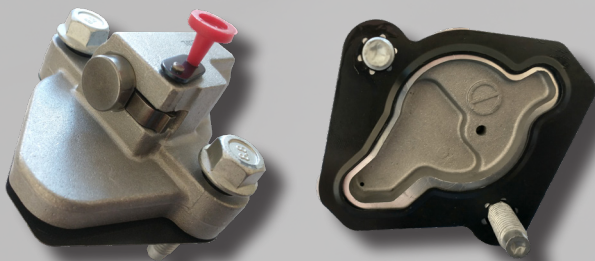
Due to incomplete OE data, there is no way to accurately identify if the Tsubaki or Borg Warner timing system was fitted on the engine assembly line.

Therefore, it is necessary for the installer to confirm which system is required for their repair.

Please use the images below to identify the correct FAI kit to order/install.

Tsubaki design with standard non-return ratchet design & central oil feed hole in chamber.

TCK336 Variants



Borg Warner design with "screw thread type" non-return mechanism & oil feed offset in oil chamber.

TCK346 Variants

