

# Technical Bulletin

## OP351 & OP382

### Oil Pumps for Mercedes Benz and Jeep

If the wrong version of the oil pump is installed, it could cause issues with the supply of oil to the engine due to the relevant Oil Galleries being in the wrong location for the engine block.



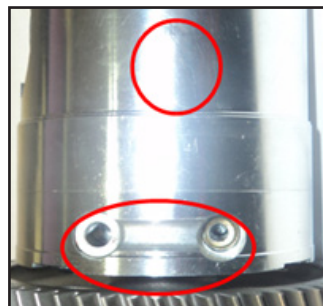
OP351



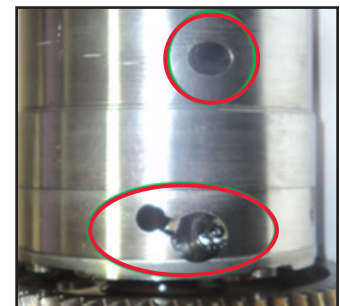
OP382

Application for OP351	OE Reference
Mercedes	A6511800400
	A6511801301
	A6511802001
	A6511802401
	A6511802601
Jeep	A651182801
	K68089287AA
	K68089288AA
	K68089288AB

Application for OP382	OE Reference
Mercedes	A6511801500



OP351



OP382

The main differences between both the oil pumps in terms of design is position and design of the oil galleries.



TB0039

+44 (0) 1525 351800



[faiauto.com](http://faiauto.com)