



## WIPER MOTORS REPLACEMENT PROCEDURE

### INTRODUCTION

This document shows assembly instructions about our wiper motors with non-threaded holes.

This procedure is due to an Agreement between Vehicle manufacturer and Wiper System manufacturer, which permits to obtain a better adhesion between the wiper motor bracket and vehicle body while reducing the risks of self-loosening during operating in a continuous vibrations environment.

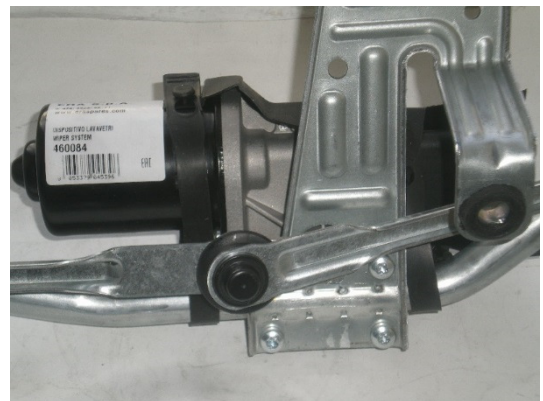
This is a Manufacturer choice, NOT a mistake. This procedure is available for ERA code 460038, 460039, 460041, 460043, 460044, 460049, 460060, 460065, 460073, 460082, 460085, 460137, 460139, 460162, 460236, 460237.



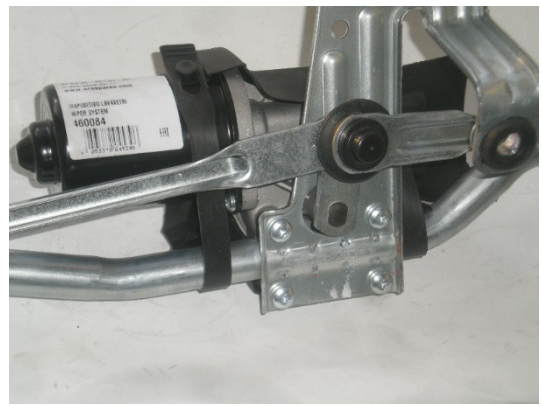
### INSTALLATION INSTRUCTION

Steps to follow:

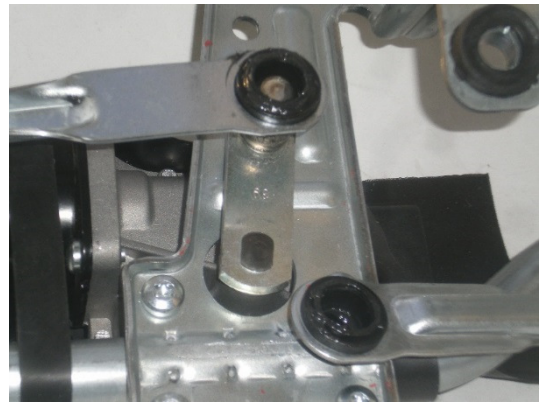
- 1) Put the system on bench and lock it.
- 2) Manage the rotation with the appropriate tool.



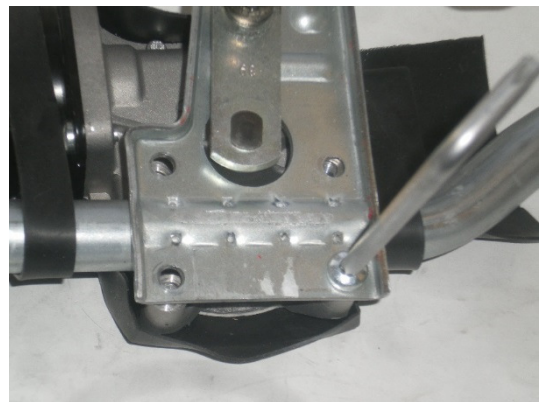
3) Rotate the output lever until the four screws are visible.



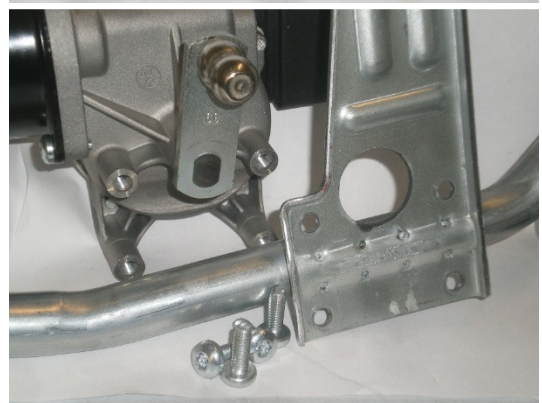
4) Detach the pushrods.



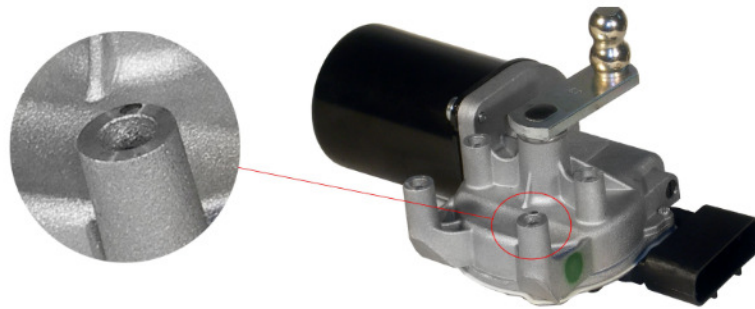
5) Remove the four screws.



6) Remove the motor from the bracket



In circled image is visible one of the new wiper motor OE fitting holes, without thread. The motor mounting holes have no thread because the fixing bolts are self-tapping.



This particularity is due to an agreement between Vehicle manufacturer and Wiper System manufacturer, which permits to obtain a better adhesion between the wiper motor bracket and vehicle body while reducing the risks of self-loosening during operating in a continuous vibrations environment.

The screw fitting is furthered by hole profile tapered, not cylindrical.

It is adequate to screw one by one with orthogonal force.

To fit again the system, please follow the reverse procedure