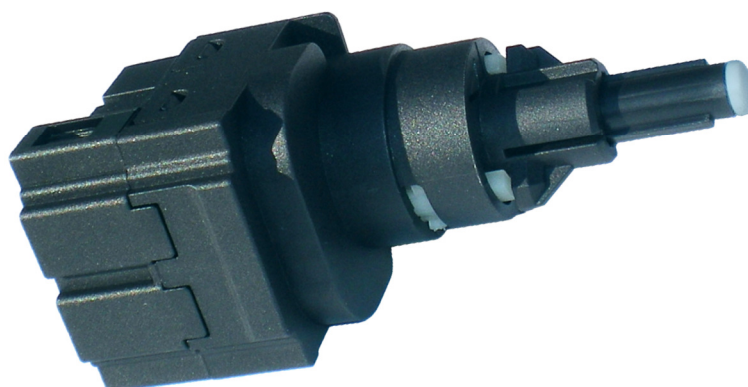




## BRAKE LIGHT SWITCH REPLACEMENT PROCEDURE



### INTRODUCTION

Shown below, you can find the procedure that you must follow to replace brake light switches. This procedure is available for ERA code 330503, 330544, 330545, 330597, 330706, 330734, 330797, 330815, 330934, 330935, 330936, 330937, 330940, 330941 e 330977.

### INSTALLATION INSTRUCTION

Steps to follow:

- 1) Unplug the connector from the Brake Light Switch.  
Remove the old switch. It has to be turned in Counter Clock Wise sense (approx. 45 °).



- 2) Take the new switch (ERA code 330503).  
ATTENTION: The switch can be tested electrically exclusively when it is totally assembled, since it is supplied in the "deactivated position".  
Insert the new Switch inside the hole of the pedal body (it has only one possible position). To fix it correctly the body has to be turned in Clock Wise sense, until the click (approx. 45°)
- 3) After the assembly , the switch is "activated" and it can be tested electrically.

