



## INA Service Info



# Mounting pin omitted

## Automatic tensioning arms in the front end auxiliary drive

Manufacturer: All

For current listing refer to catalogue media

As part of our continuous efforts to improve our products, Schaeffler Automotive Aftermarket has modified the automatic tensioner arm for the front end auxiliary drive.

The mounting pin (Fig.1) is no longer supplied, see (Fig.2) This means that the spring, which later keeps the belt tension is almost tension-free prior to installation.

Installation of the multi-ribbed belt using an appropriate diameter peg is recommended.

Both versions comply with the technical specifications and can be used without restrictions. We may have mixed stocks during the transitional period.



Image 1: Example of an old version with mounting pin

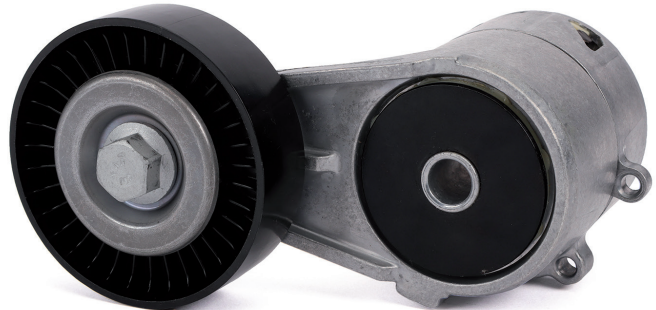


Image 2: Example of a new version without mounting pin

Please observe the vehicle manufacturer specifications!

**You want more? We can help!**

Phone: +44 (0) 1432 264 264

Fax: +44 (0) 1432 375 760

aftermarket.uk@schaeffler.com

www.repexpert.co.uk