



INA Service Info



Deflection pulley 532 0398 10

New seal design

Manufacture: BMW

Models: 3', 5', 6', 7', X3', X5'

Engines: M47 D20
M57 D25
M57 D30
M67 D39
M67 D44

Part no.: 532 0398 10

For current listing refer to catalogue media

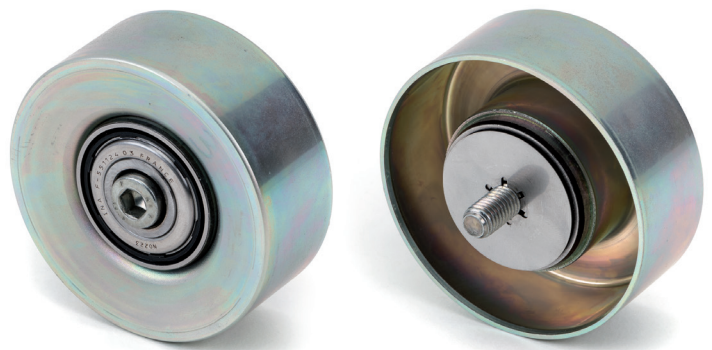


Fig. 2: 532 0398 10 – Deflection pulley with new seal design and add-on components



Fig. 1: Deflection pulleys with old seal design

For the vehicles listed above, Schaeffler Automotive Aftermarket offers a deflection pulley with a new seal design (Fig. 2).

During the transition phase, stocks may become mixed with both new and old design parts.

Both versions meet the technical specifications and can be used without restriction.

Please observe the vehicle manufacturer specifications!

You want more? We can help!

Phone: +44 (0) 1432 264 264

Fax: +44 (0) 1432 375 760

aftermarket.uk@schaeffler.com

www.repxpert.co.uk

SCHAEFFLER
REP>XPERT