



INA Service Info



Overrunning alternator pulley 535 0279 10

Visual differences

Manufacturer: Audi, Seat, Skoda, Volkswagen

Models:

- Audi: A1, A3, Q3
- Seat: Ibiza, Leon, Toledo
- Skoda: Fabia, Octavia
- Volkswagen: Beetle, Derby, Golf VII, Golf Sportsvan, Jetta, Passat, Polo, Scirocco, Vento

Engines: 1.2 TSI, 1.2 TFSI, 1.4 TSI, 1.4 TFSI

Part no.: 535 0279 10

OE number: 04E 903 201
04E 903 201 A
04E 903 201 E
8V0 903 119
8V0 903 119 A



Fig. 1: 535 0279 10 – INA overrunning alternator pulley

The models listed above may be equipped with different configurations of the overrunning alternator pulley (Fig. 2).

The new overrunning alternator pulley 535 0279 10 (Fig. 1) replaces the previous versions.

It features a stronger, improved spring, which can cover a larger range of the engine's rotational irregularities.

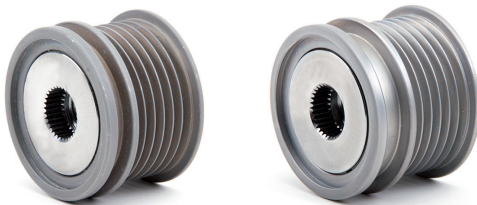


Fig. 2: Superseded configurations

Please observe the vehicle manufacturer specifications!

You want more? We can help!

Phone: +44 (0) 1432 264 264
Fax: +44 (0) 1432 375 760
aftermarket.uk@schaeffler.com
www.repxpert.co.uk