



Service Info



Over-running alternator pulley 535 0267 10

Visual differences

Manufacturers: Citroën, Mitsubishi, Peugeot

Models:

Citroën: C4 Aircross
Mitsubishi: ASX, Lancer, Outlander II,
Outlander III

Peugeot: 4008

Engines:

Citroën/Peugeot: 1.8 HDi
Mitsubishi: 1.8 DI-D, 2.2 DI-D

Part no.: 535 0267 10

OE number:

Mitsubishi: 1800A201, 1800A333



Figure 1: Previous design

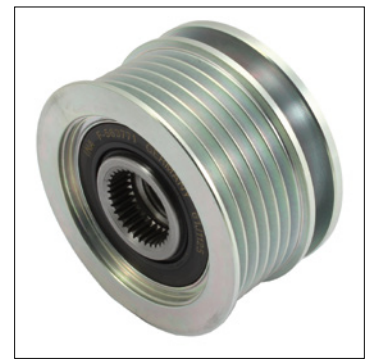


Figure 2: New design

As part of our continuous efforts to improve our products, modifications have been made to the over-running alternator pulley with part number 535 0267 10.

This Service Information sheet shows the visual features of the previous version (Figure 1) and the new version (Figure 2).

During the transition period, we may have mixed stocks of both types.

The two versions differ only in their appearance. Both comply with the technical specifications and can be used without restrictions.

Observe the specifications of the vehicle manufacturer!

Spare parts and technical information can be found under www.schaeffler-aftermarket.com or www.RepXpert.com.

Phone: +44 (0) 14 32 264 264*
Fax: +44 (0) 14 32 375 760
hfd-info@schaeffler.com
www.schaeffler-aftermarket.com

* Calls from within the UK 08457 001100

SCHAEFFLER
AUTOMOTIVE AFTERMARKET

