



FAG Service Info



Installation instructions for FAG 201050 / 632203.H195

Check the protective rings behind the wheel hub

Manufacturer: Mercedes-Benz
Volvo

Part no.: 201050 (THU - Truck Hub Unit)
632203.H195 (TAM - Truck Axle Modul)

See parts catalogue for current assignment

Schaeffler Automotive Aftermarket offers both the THU (Truck Hub Unit) and the TAM (Truck Axle Modul) for the vehicles listed above. This consists of a wheel bearing housing, wheel bearing and ABS sensor ring.

If it is found during the repair that the protective ring behind the wheel hub is defective, the protective ring must be replaced. One way of ordering a replacement is based on the vehicle manufacturer.

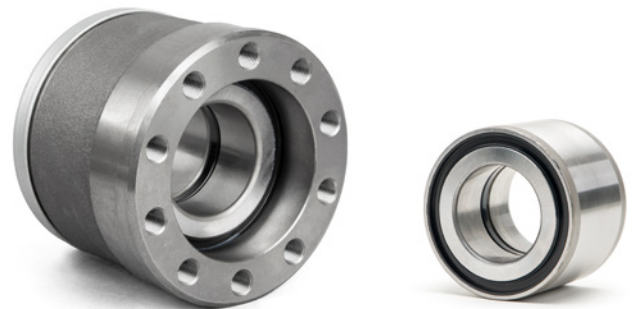


Image 1: FAG TAM (Truck Axle Modul) – part no.: 632203.H195 (left), FAG THU (Truck Hub Unit) – part no.: 201050 (right)

When identifying the part, please note that there are three different variants. To identify the correct protective ring, the diameter of the sealing seat must be measured.



Figure 2: To determine which of the three protective rings needs to be installed, the diameter of the sealing seat must be measured

Measured diameter	Protective ring required	OE-Part no.
86,70 to 86,85 mm	with no coloured marking	A 970 997 03 46
86,85 to 87,05 mm	with red marking	A 970 997 09 46
87,05 to 87,30 mm	with white marking	A 970 997 10 46



Image 3: The protective rings have different inner diameters.

Please observe the vehicle manufacturer specifications!

You want more? We can help!

Phone: +44 (0) 1432 264 264

Fax: +44 (0) 1432 375 760

aftermarket.uk@schaeffler.com

www.repxpert.co.uk

SCHAEFFLER
REPXPPERT