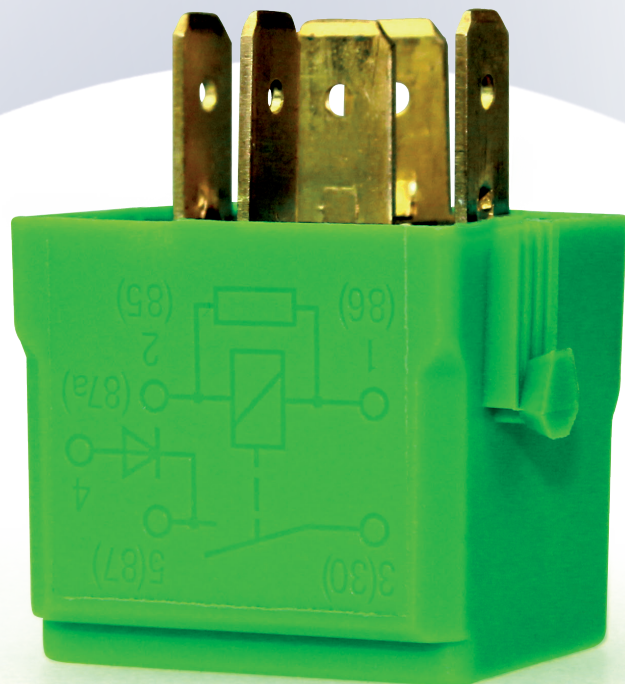
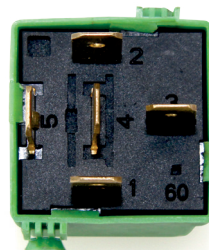
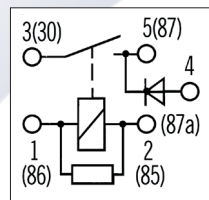


# RELAIS, KOMPRESSOR LUFTFEDERUNG

23401

- ✓ 5 Pins
- ✓ inkl. Haltenasen
- ✓ Nennspannung 12 V
- ✓ Schaltstrom 40 A
- ✓ Spulenwiderstand 85 Ohm



**ERHÄLTlich AB JUNI 2015**

**MERCEDES-BENZ** S-CLASS COUPE (C216), C-CLASS (W204), GL-CLASS (X164),  
B-CLASS (W245), S-CLASS (W221), M-CLASS (W164), R-CLASS (W251, V251), A-CLASS (W169),  
SL (R129), A-CLASS (W168), E-CLASS (W211), CLS (C218), E-CLASS COUPE (C207), Vaneo (414),  
S-CLASS COUPE (C215), E-CLASS (W212), SL (R230), GLK-CLASS (X204),  
G-CLASS (W463), S-CLASS (W220), **MAYBACH** MAYBACH (240\_)

X-REF: MERCEDES BENZ 002 542 76 19

**V30-71-0037**

Reference numbers and names, with the exception of VIEROL AG, are for comparison only and may not be disclosed in invoices.

VEMO\_23401\_vProduct\_Relais\_201400904