



CVJ – ENG/03 – 05/2019



CV BOOTS

Possible causes of damage

Damage

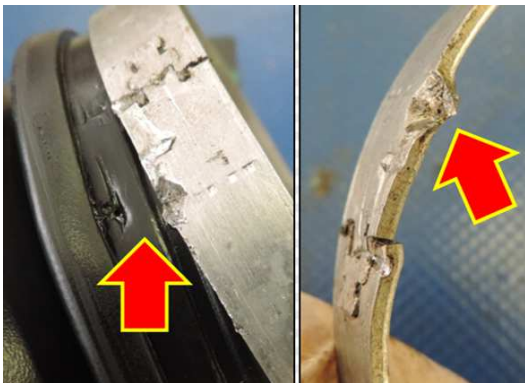
- + Grease leakage
- + Presence of grease under the clamp.



1- Bad clamping

2- Bad clamp or bad boot position

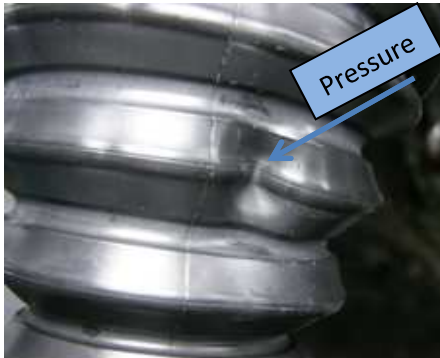
3- Tear boot



4- Shock on the boot clamp



Boot reversion



Causes:

- 1- Bad handling
- 2- External damage/aggression
- 3- Strong pressure on the boot

Cutting



Causes:

- 1- External impact/shock
- 2- Damage/aggression
- 3- Tightening clamp too important

Recommendations

The manufacturers fitting instructions and specified torque setting should always be followed. The correct tools should always be used for the removal and fitment process.

Refer to the vehicle applications in our online catalogue: <http://lc.cx/catalog-ra>



**FOLLOW THE RECOMMENDATIONS
OF THE VEHICLE MANUFACTURER.**