

Level sensor for AdBlue®-Tank

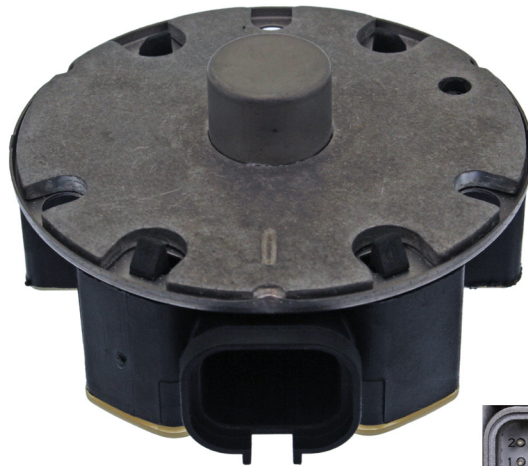
If this tank sensor fails it will send a false signal to the ECU, for example 'AdBlue tank is empty'. In this case the engine will switch to 'Emergency Program' mode resulting in significant loss of power. This component must then be replaced immediately.



Please note!

In addition to loss of power in 'Emergency Program' mode the emission standard is not reached therefore Euro 4, 5 or 6 standard is not achieved, since tolls and road tax calculation is based on the Euro# emission standard then strictly speaking this could be classed as a criminal offence. The police are able to read this 'error' from the vehicle even after a long period of time which could ultimately result in a fine or criminal conviction.

febi 40123



Repl. No. 81.15408.0006
to fit MAN KAT, TGA, TGS, TGX, HOC, Lion's, Lion's City, Lion's Coach, Lion's Regio

For more febi spare parts please visit: www.trucks.febi-parts.com