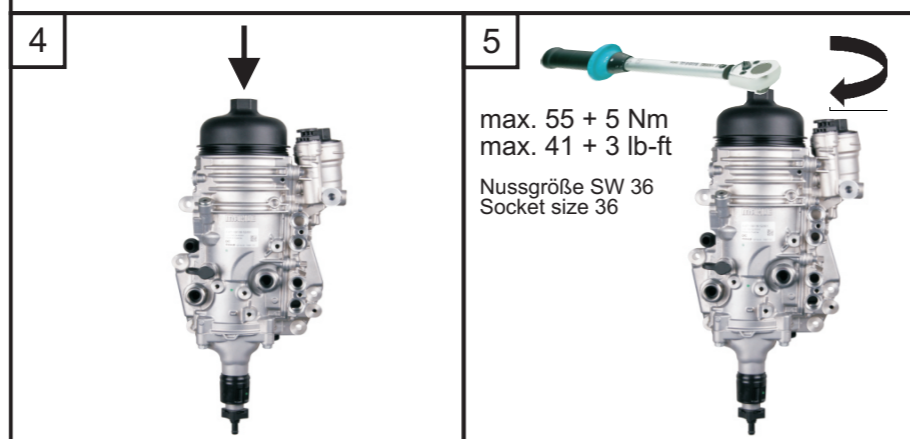
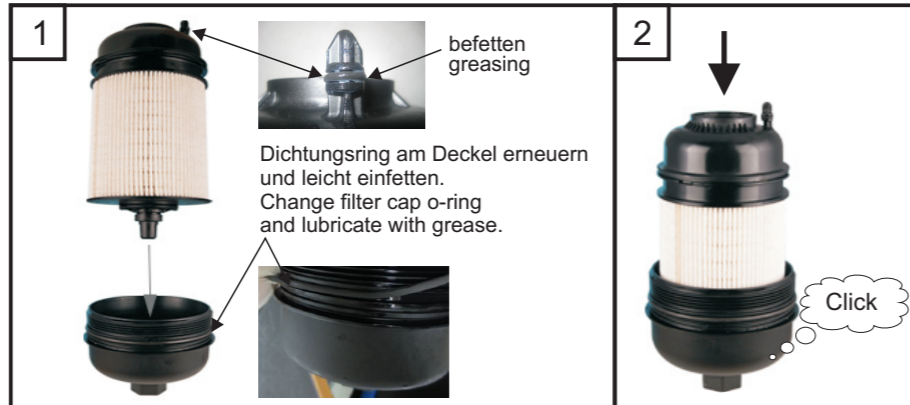


Only the German-language version of this text shall be binding. The reproduction, distribution and utilization of this document as well as the communication of its contents to others without explicit authorization is prohibited. Offenders will be held liable for the payment of damages. All rights reserved in the event of the grant of a patent, utility model or design.

Bitte beachten Sie die folgende Montageanleitung!
Please pay attention to the following installation instruction!
以下の指示に従って取り付けてください。



Vers. vers.	Aend.-Nr. change no.	Aenderungsbeschreibung change description	Datum date	erstellt generated	Buero depart.
01	----	Format A5; Detail Dichtungsringe inkl. Befettung	14.01.2014	Graf	257
02	X0021236	war Darstellung der Fetttube, soll Fettbeutel	23.06.2017	Graf	257
03	X0021528	war Darstellung mit zwei Fettbeuteln	21.08.2017	Graf	257

Bemerkungen: remarks:
A5 Format - vorne bedruckt

Verpackungsart packaging type
Mat.-Nr. part no. 70601723

Oberflächenbeschaffenheit surface property ✓

Werkstoff / material 50 - 70g/m²
Oberflächenschutz surface protection
Masse kg (berechnet / gewogen) mass kg (calculated / weighed)

Proj.-Nr. proj. no. 61DE-50800
Kd.-Dok.-Nr. cust. doc. no.
enthält krit. Merkmal contains crit. charact. nein / no:

Kd.-Verw. cust. appl.
Kd.-Schl. cust. key 0040
Kd.-Name cust name Daimler

zul. Abweichungen / allowed deviations
Maststab / scale
Referenz reference

Format format A3
CorelDraw
Blatt page 1 von of 1

MAHLE released
D-70376 Stuttgart
Schutzvermerk DIN ISO 16016 beachten
consider protection notice DIN ISO 16016
Montageanleitung
KX_0224_-00
installation instruction

Start start 2013.06.12
Verant. resp. Ogrisb
Buero depart. 257
Dok.-Art doc. type 200
Teildok. doc. part 000
Reifegrad design level 5

Fert. fin. 2013.06.12
Erst. gen. Ogrisb
Dok.-Nr. doc. no. 5901-20117420-S00
Version version 03