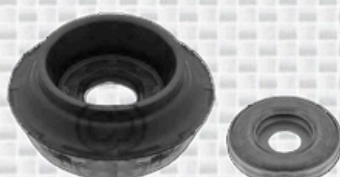
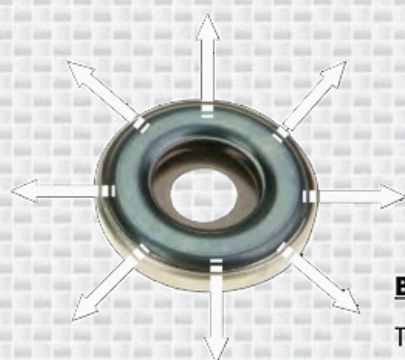


Bearing feature mk100

Renault Clio II



FI136EU



Mounting kit + bearing : MK100



Renault Clio II

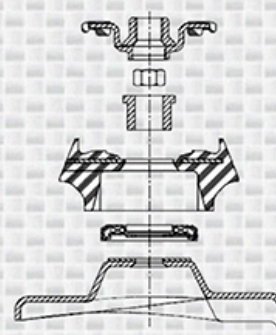
Bearing feature of mounting kit : MK100

The bearing contained in the mounting kit reference MK100 has a lateral clearance of about 1 mm (same OE number 82 00651172).

This lateral play disappears when the vehicle is in support (wheel on the ground)

RENAULT

		REFLEX		ORIGINAL		LL		H	
		ADVENTURE				LA			
CLIO II (F) - (TR)									
1.1, 1.2	2.98 > 12.12	E4382	11272	MC212 MK100 FK066	5/8	E1233	23896		OH-
1.2 16 V	2.98 > 12.12	E4383	11273	MC212 MK100 FK066	5/8	E1233	23896		OH-
1.4, 1.4 16 V									
1.6, 1.6 16 V									
1.9 D, 1.9 dTi, 1.5 dCi									
1.4, 1.6, 1.9 dTc	2.98 > 12.12	E4727			5/8				OH-



Tightening torque :

Upper mounting : 6.0 da N.m

Lower mounting : 10.5 da N.m

You will find all our shock absorber, our online catalog
www.monroecatalogue.eu