



3483 ... / 3488 ...

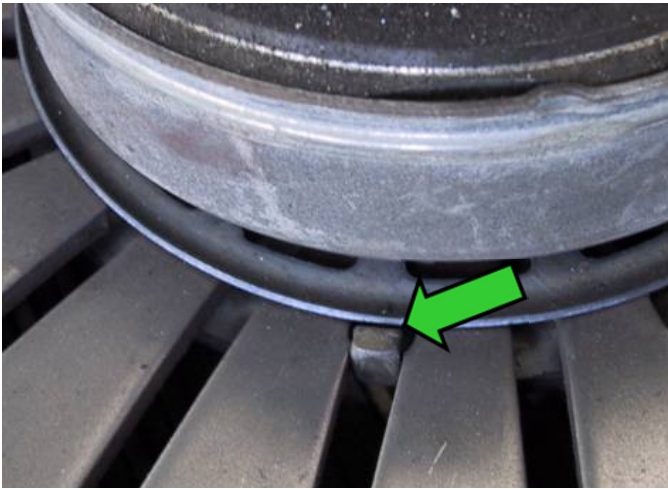


Fig. 1: Guide pin of release ring in its correct position

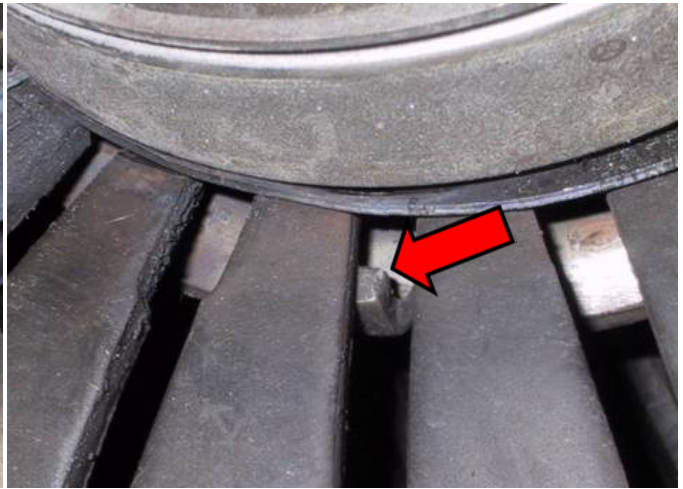


Fig. 2: Guide pin of release ring incorrectly seated -The pin slipped under the diaphragm spring

The correct position of the guide pins (Fig. 1) is between the recesses of the diaphragm spring tips. If one of these guide pins slips under the diaphragm spring tips due to improper handling / incorrect transportation eccentric / awry releaser contact will occur and inevitably cause premature failure. Any shock during transportation or handling prior to installation can force the releaser out of its centered position. This position is needed to ensure correct operation (Fig. 2).

## **NOTICE**

Make sure to verify the correct position of the releaser prior to installation to avoid such damage.



[www.zf.com/serviceinformation](http://www.zf.com/serviceinformation)