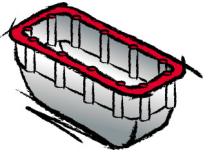
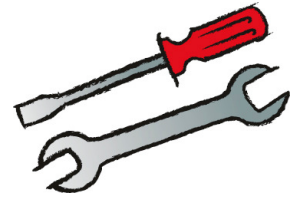


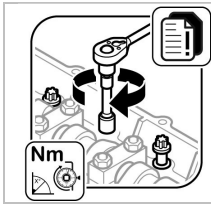


Das Original

TSI 10/11



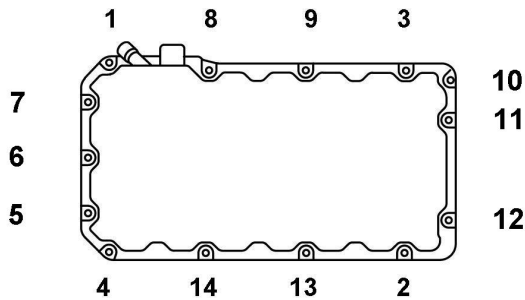
# Mercedes-Benz OM 541.9 | 542.9



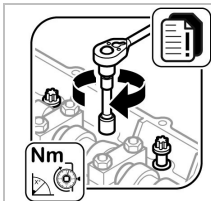
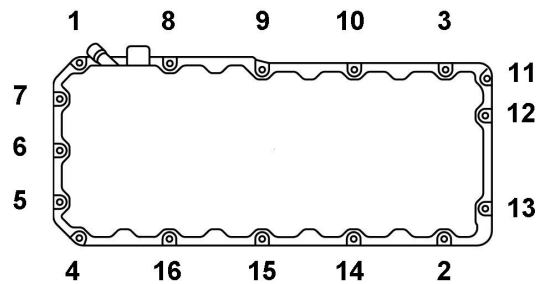
Metal ligero | Thermoplast

55 Nm

Metal ligero | Thermoplast OM 541.9:



Metal ligero OM 542.9:

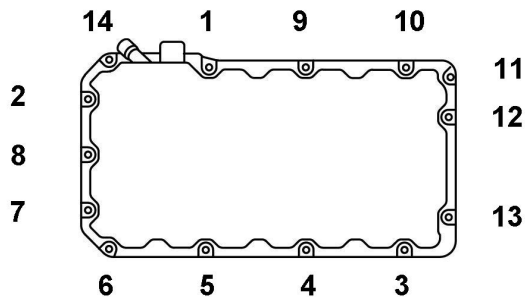


Duroplast

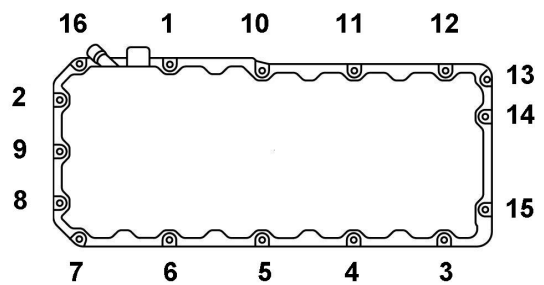
1.er nivel 10 Nm

2.º nivel 40 Nm

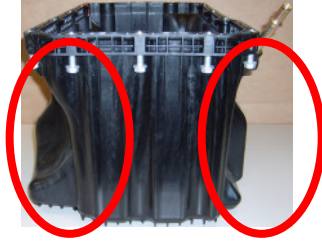
Duroplast OM 541.9:



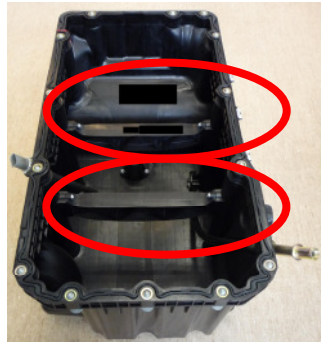
Duroplast OM 542.9:



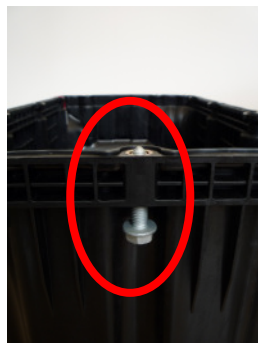
**Cárter de aceite Thermoplast**  
Características diferenciadoras:



- Forma abovedada.



- Refuerzos interiores.



- Sin tornillos microencapsulados, por lo que se puede prescindir del repaso de las roscas en el cárter del cigüeñal, en el cárter de dirección y en la tapa anterior de la caja.
- No es necesario renovar los tornillos.