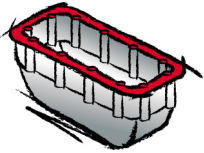
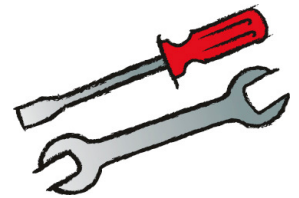


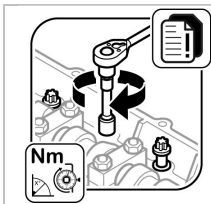


Das Original

TSI 10/11



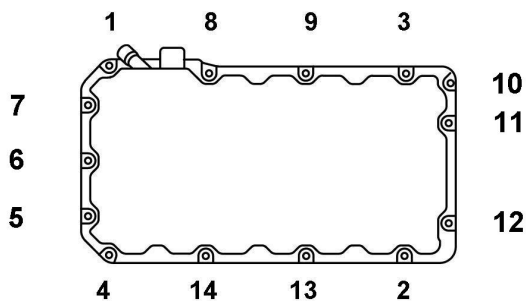
# Mercedes-Benz OM 541.9 | 542.9



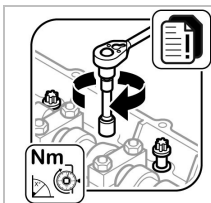
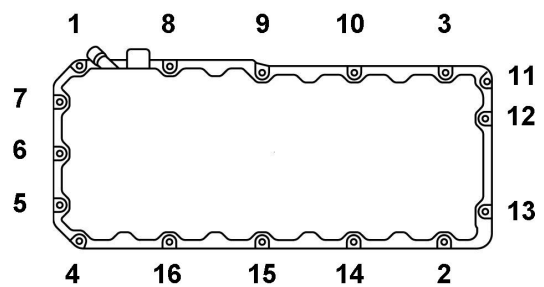
Métal léger | Thermoplastique

55 Nm

Métal léger | Thermoplastique OM 541.9:



Métal léger OM 542.9:

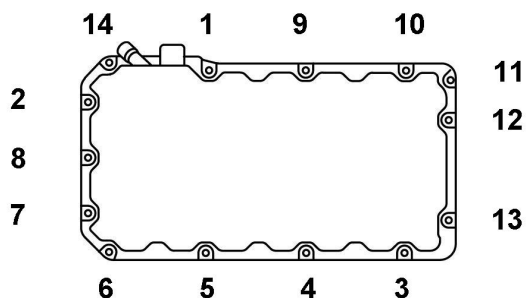


Résine thermodurcissable

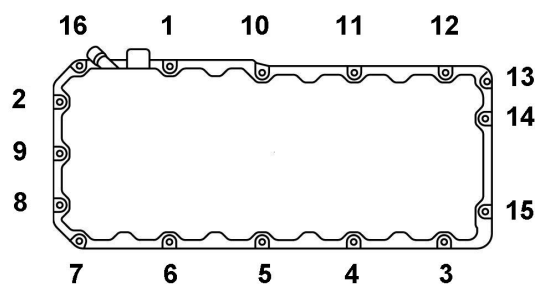
1er palier 10 Nm

2ème palier 40 Nm

Résine thermodurcissable OM 541.9:

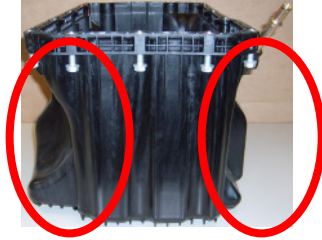


Résine thermodurcissable OM 542.9:

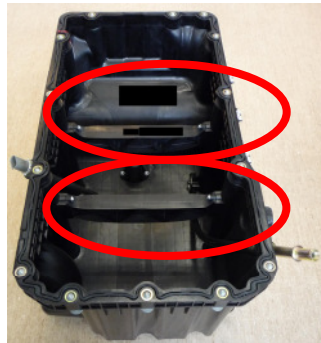


## Carter d'huile Thermoplastique

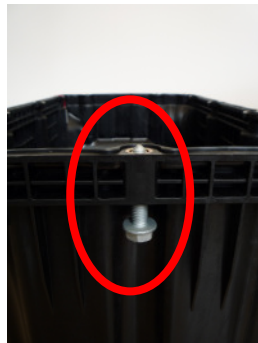
Caractéristiques significatives:



- Forme cintrée.



- Renforcements internes.



- Pas de vis à microcapsules. Permet d'éviter l'arasage des filets du carter de vilebrequin, du boîtier de commande et du couvercle de boîtier avant lors du démontage et du montage.
- Il n'est nécessaire de remplacer les vis.